

# PEDESTALS

## 18 SERIES

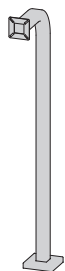
## GOOSENECK PEDESTALS FOR ACCESS CONTROL SYSTEMS

### FEATURES

- 12-inch gooseneck reach
- Car-, SUV-, semi-, and dual-height models
- Pad-mount and in-ground models
- Steel (ST) and aluminum (AL) models
- 14-ga, 2-inch square-tube construction
- Durable black powder-coated finish



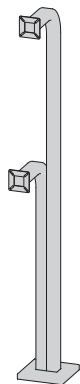
18-42(AL/ST)



18-48ST



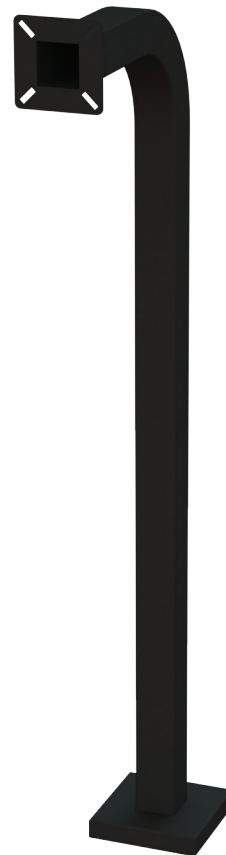
18-72ST



18-72DHST



18-72GR(AL/ST)



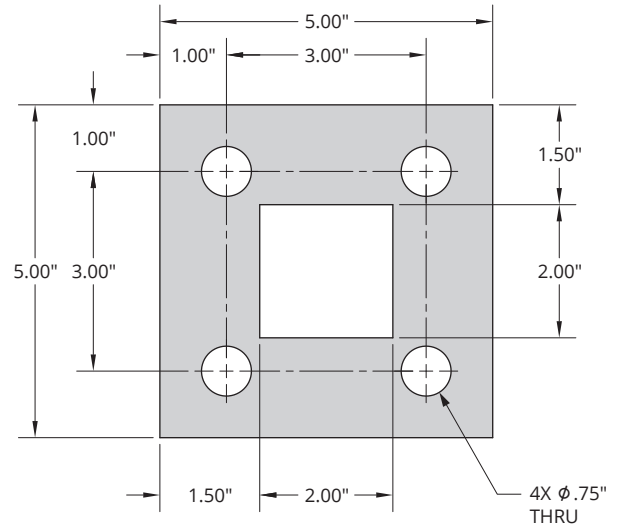
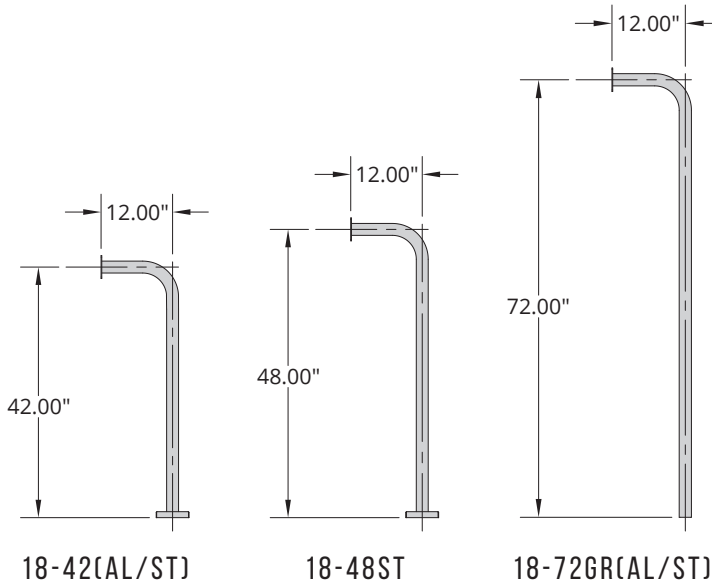
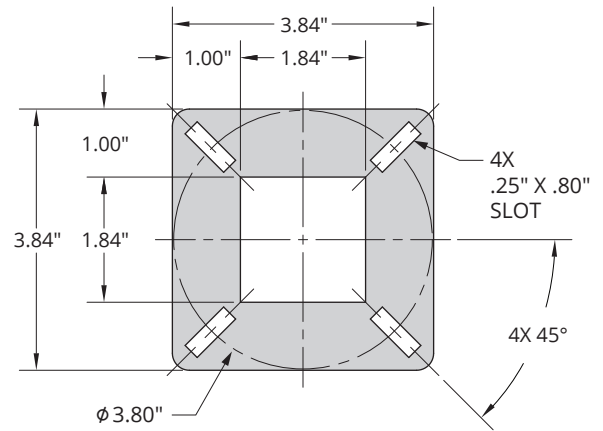
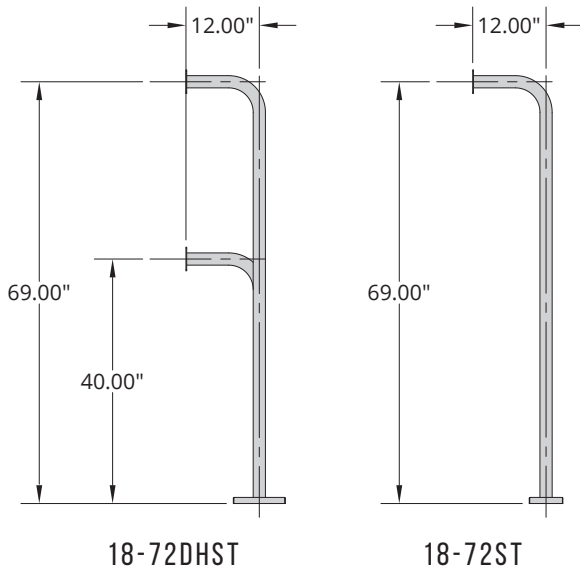
### JUST THE RIGHT FIT

Whether you're mounting on concrete or in the ground or will be catering to cars, SUVs, and/or semis, we have the product for you.

### STURDY AND DURABLE

Powder-coated 2-inch aluminum or steel square tubing allows our pedestals to stand up to the elements for years to come.





Additional information and dimensional drawings  
can be found at [securitybrandsinc.com/resources/](http://securitybrandsinc.com/resources/)

## AVAILABLE MODELS

MODEL	DESCRIPTION	MOUNT HEIGHT	MATERIAL
18-72DHST	pad mount, dual height	40", 69"	steel
18-72ST	pad mount, semi height	69"	steel
18-42(AL/ST)	pad mount, car height	42"	aluminum / steel
18-48ST	pad mount, SUV height	48"	steel
18-72GR(AL/ST)	in ground, car height	72"	aluminum / steel