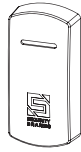




1

Unpack box and make sure you have all items shown here.
(Hex nuts to mount to controller faceplate should be with faceplate)



Reader Cover



Reader Base



Self-Tapping Screw
(2x)



Faceplate Screw
(2x)



IMPORTANT

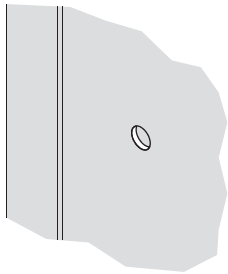


If mounting the proximity card reader to a surface like a wall or door frame, proceed to **Step A2** on this page.

If mounting the proximity card reader to a controller faceplate, remove the cover plate or current card reader, keep the hex nuts handy, and proceed to **Step B2** on the next page.

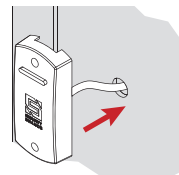
A2

Drill 5/8-inch pass-through hole in surface in center of desired reader mounting location.



A3

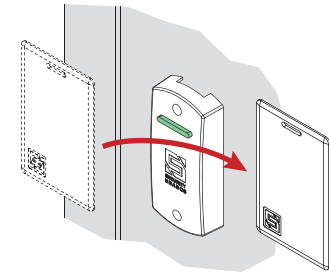
Feed Reader Base wiring through pass-through hole, and wire reader to Wiegand controller (not included).



Refer to Wiegand controller instructions for wiring details. If controller only has one LED terminal, connect gray wire (green LED) for standard operation.

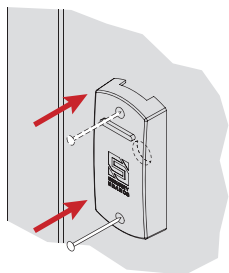
A4

Power up Wiegand controller, and make sure Reader is working correctly by scanning a valid card (not included).



A5

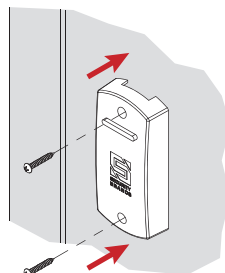
Hold Reader Base against mounting surface, and use nail to tap two marks.



Nail not included.

A6

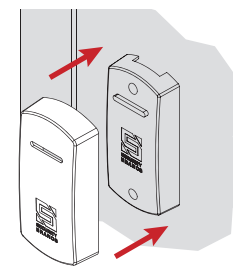
Mount Reader Base to surface using Self-Tapping Screws. Use drywall anchors (not included) if desired.



Pre-drill appropriately sized holes if using anchors or if mounting to metal.

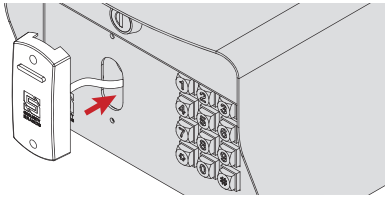
A7

Snap Reader Cover onto Base, lining up LED lens on Base with slot in Cover. Parts will snap together securely.



B2

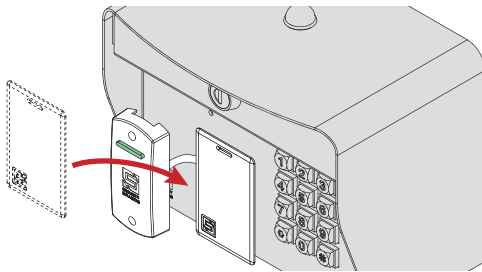
Feed Reader Base wiring through pass-through in controller faceplate, and wire to Wiegand inputs (Section C).



Reader is designed to fit and connect to Edge E1, E2, E3, and Ascent K2 units (not included).

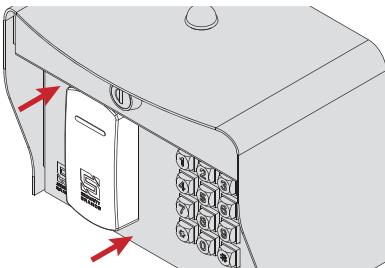
B3

Power up Wiegand controller, and make sure Reader is working correctly by scanning a valid card (not included).



B4

Attach Reader to faceplate using Faceplate Screws and existing hex nuts; then snap Reader Cover onto Base.



C

Typical Wiring

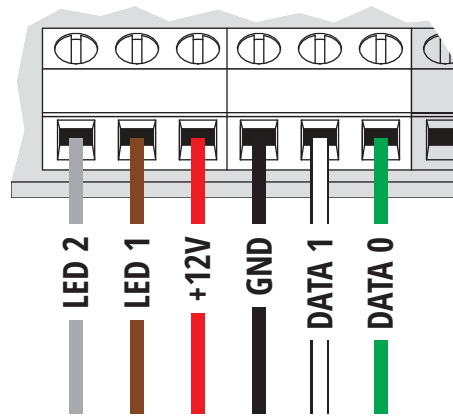
(For many Wiegand controllers including Security Brands controllers)

ⓘ IMPORTANT! Refer to your Wiegand controller manual/instructions for wiring details.

⚠ CAUTION! Do NOT exceed 16 VDC! Overpowering reader may permanently damage it!

Wiegand Controller

Edge (27-210) "Wiegand 1" Terminals Shown



To Proximity Card Reader

Reader Wire Harness Guide

	Red	DC Power (+)
	Black	Ground (GND)
	Green	Data 0
	White	Data 1
	Gray	Green LED
	Brown	White LED
	Yellow	Beep Control
	Blue	Hold

If controller only has one LED terminal, connect gray wire (green LED) for standard operation.

⚠ WARNING ⚠

AUTOMATIC GATES CAN CAUSE SERIOUS INJURY OR DEATH!

ALWAYS CHECK THAT THE GATE PATH IS CLEAR BEFORE OPERATING!

REVERSING OR OTHER SAFETY DEVICES SHOULD ALWAYS BE USED!

NEED HELP

Call (972) 474-6390

Email techsupport@securitybrandsinc.com

We are available **Mon-Fri / 8am-5pm Central**



SECURITY BRANDS INCTM
your *partner* in access control