



**1** Carefully unpack box.

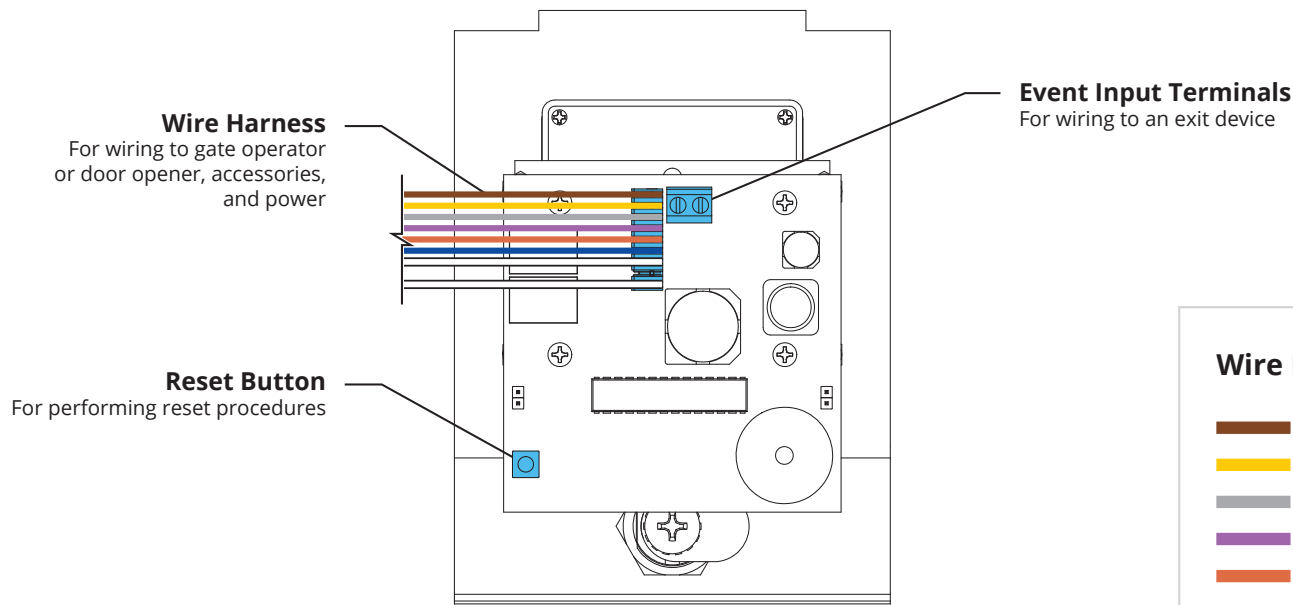
**2** Make sure you have everything shown here.

Keypad Unit      Key      Carriage Bolt (4x)      Hex Nut (4x)

**3** Unlock and remove front panel of keypad unit; then using carriage bolts and hex nuts, attach unit to pedestal as shown.

## What's what?

Important components labeled



### Keypad Unit Front Panel

Shown as it would appear with front panel inserted into back housing as in Step 4.

#### Wire Harness Guide

	Brown	COM (Relay A)
	Yellow	N/C (Relay B)
	Gray	COM (Relay B)
	Purple	N/O (Relay B)
	Orange	N/O (Relay A)
	Blue	N/C (Relay A)
	White	Power
	White	Power

**4** For ease of wiring, insert front panel into enclosure as shown.

**! WARNING!**

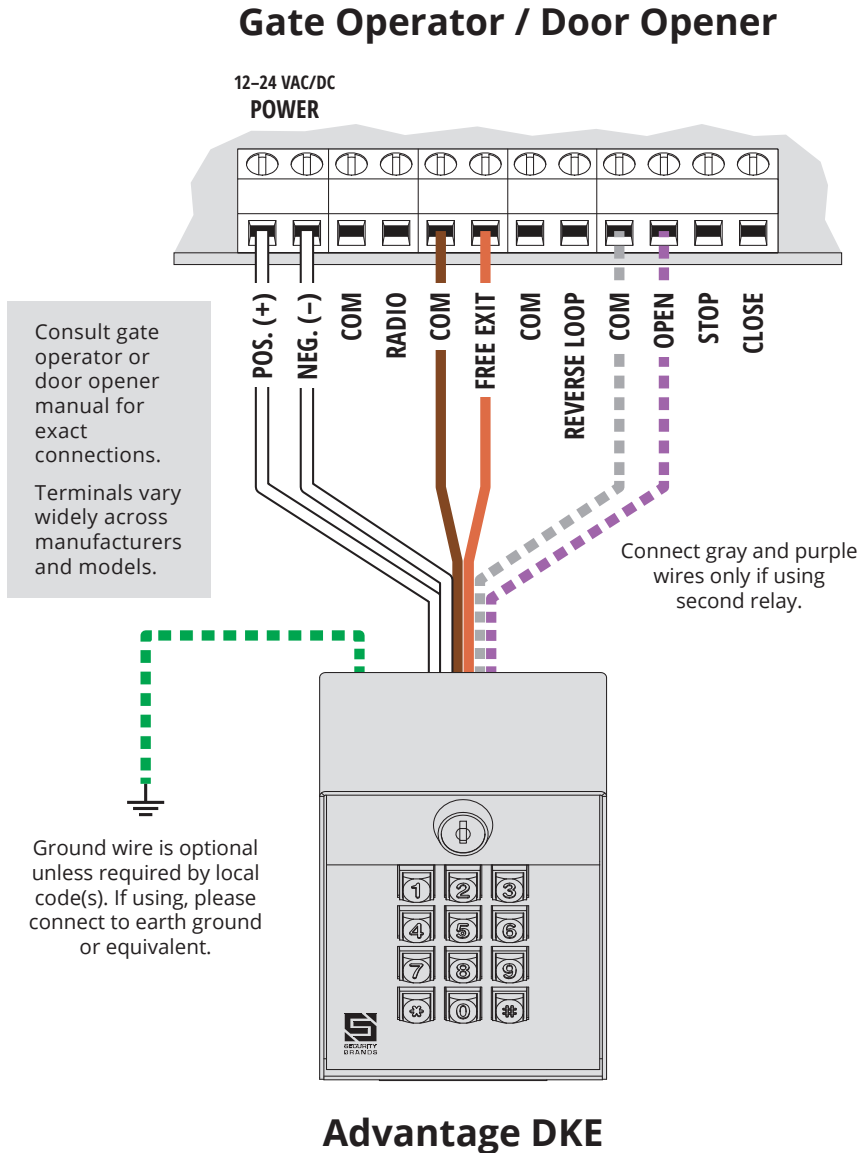
**AUTOMATIC GATES CAN CAUSE SERIOUS INJURY OR DEATH!**

**ALWAYS CHECK that the GATE PATH IS CLEAR BEFORE OPERATING!**

**REVERSING or other SAFETY DEVICES SHOULD ALWAYS BE USED!**

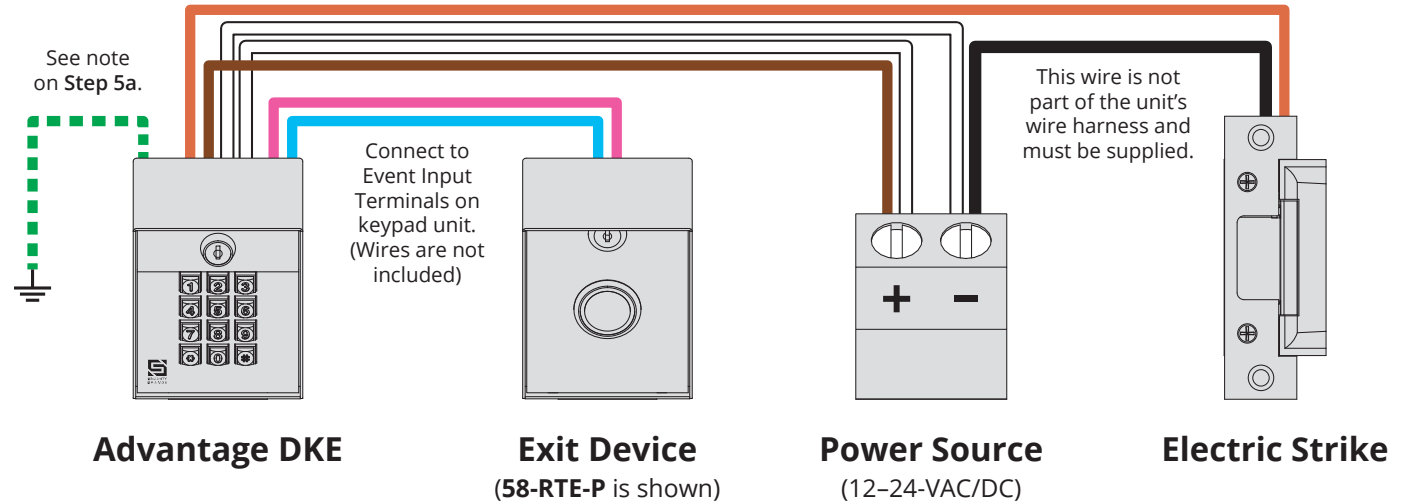
## 5a Make the connections

Wiring for Gate Operator or Door Opener



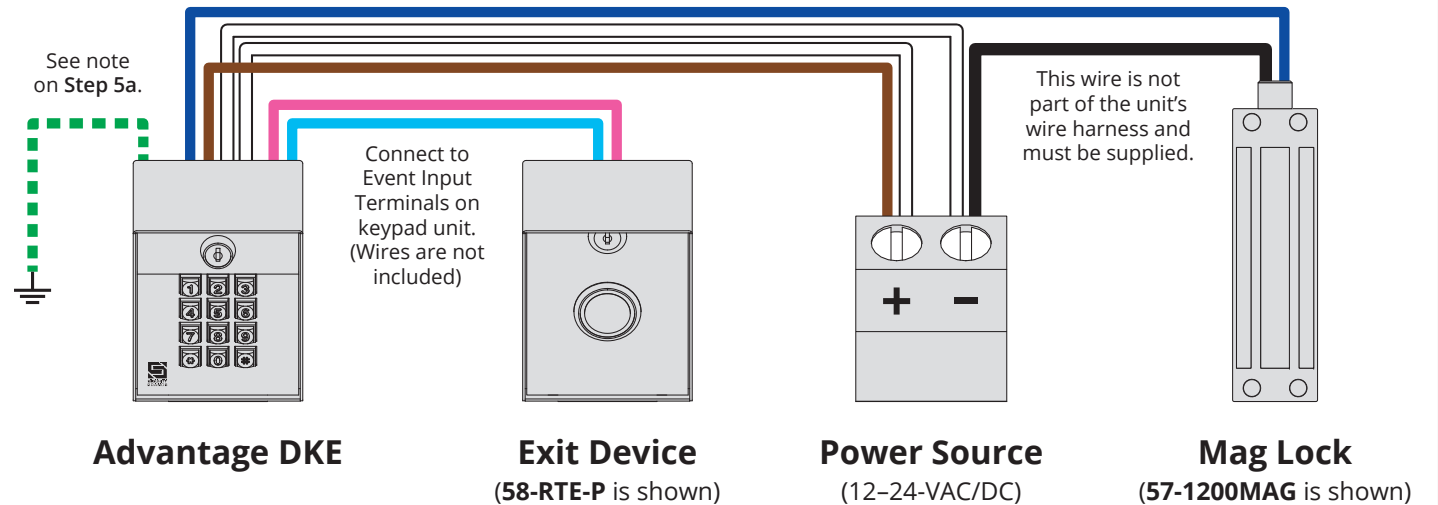
## 5b Make the connections

Wiring for Electric Door Strike and Exit Device



## 5c Make the connections

Wiring for Mag Lock and Exit Device





**6 Add Access Code(s) to Relay A.**  
(To add multiple codes, enter each of them before pressing pound key)

1 2 5 1 → 1 → ? ? ? ? → #

Master Code (can be changed)      Sub Mode      Access Code(s) (4 digits; numbers only)

**NOTE:** The Master Code is for programming only and will not trigger the relay. The green arrow indicates a "good" tone on the keypad. An incorrect entry will sound a "bad" tone.

**7 Make sure gate path is clear; then enter access code on keypad and confirm gate opens.**

**INSTALLATION COMPLETE!**

Your system is ready to use.

**A1 Additional Programming**

**Delete Code(s)**  
(To delete multiple codes, enter each of them before pressing pound key)

1 2 5 1 → 2 → ? ? ? ? → #

Master Code (can be changed)      Sub Mode      Code(s) to Be Deleted (4 digits; numbers only)

**Change Master Code**

1 2 5 1 → 3 → ? ? ? ? →

Current Master Code (1251 is default)      Sub Mode      New Master Code (4 digits; numbers only)

**Set Latch Code**

1 2 5 1 → 5 → ? ? ? ? →

Master Code (can be changed)      Sub Mode      Latch Code (4 digits; numbers only)

**Things to Know**

**The Star Key (\*)**  
The star key deletes your current entry. If you happen to make a mistake keying in a code, simply press the star key to delete the entire entry and start over.

**The Pound Key (#)**  
The pound key is good for one thing and one thing only: exiting Programming Mode. Whenever you're in Programming Mode, simply press the pound key to get out.

**Reset Procedures**  
If for some reason the Master Code is forgotten or the unit needs to be reset to factory defaults, two reset procedures are available: **Master Reset** and **Unit Reset**.

These procedures can be found on **Page 5** of this guide.

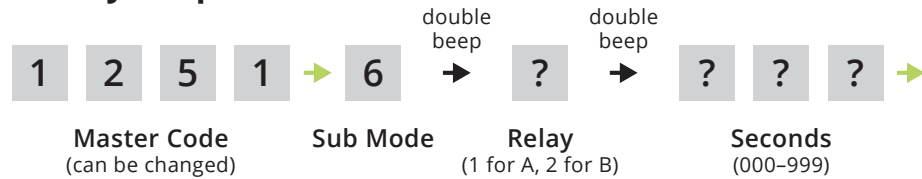
**NOTE:** Green arrow indicates "good" tone on keypad. Always wait for good tone before moving on.

**Programming Sub Modes**

- 1 Add Access Code(s) to Relay A
- 2 Delete Code(s)
- 3 Change Master Code
- 5 Set Latch Code (Relay A ONLY)
- 6 Set Relay Output Time
- 7 Add Access Code(s) to Relay B
- 9 Configure Event Input
- 0 Delete All Codes

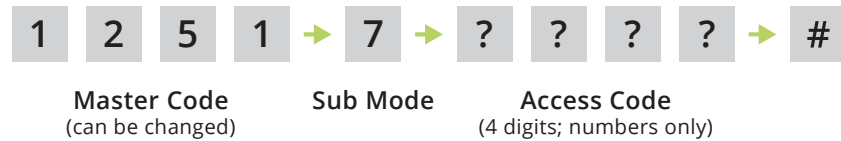
**A2 Additional Programming (continued)**

**Set Relay Output Time**

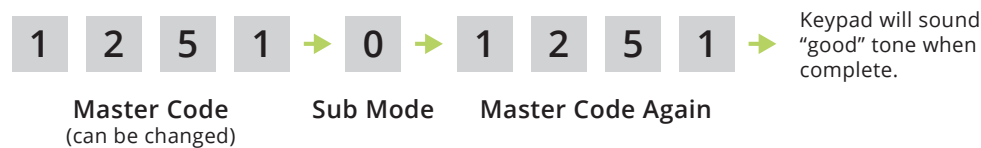


**Add Access Code(s) to Relay B**

(To add multiple codes, enter each of them before pressing pound key)



**Delete All Codes (Cannot Be Undone)**



**Configure Event Input**

(Allows an external device to affect keypad operation or trigger a relay)

**Modes**

**Mode 1 - Remote Inactive Mode**

Disables all Relay A codes when input is received from external device

**Mode 2 - Arming Circuit Mode**

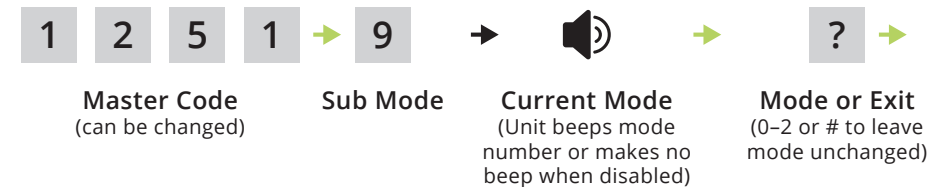
Turns on keypad unit when input is received from external device

**Mode 3 - Remote Open Mode**

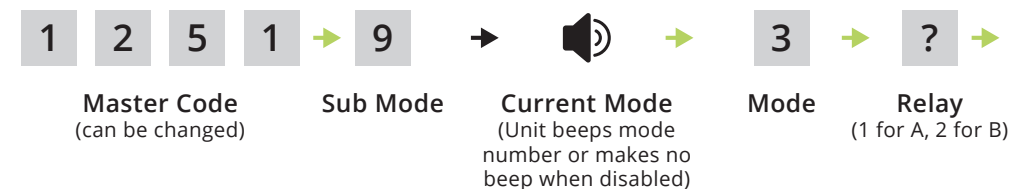
Triggers either Relay A or Relay B when input is received from external device

**Mode 0 - Event Input Disabled**

**Set Mode 1, Mode 2, Disable, or Check Current Mode**



**Set Mode 3**



NOTE: Green arrow indicates "good" tone on keypad. Always wait for good tone before moving on.



## B Reset Procedures

**NOTE: If an error is made during these procedures, an "error" tone will sound and you must start again from the beginning.**

### Master Reset

(Used if the Master Code is unknown, if the Latch Code is unknown and the unit is in Latch Mode, or if the Sleep Code is unknown and the unit is in Sleep Mode. All other codes will be retained after completing this procedure.)

**Step 1 - Open front panel on unit.**

**Step 2 - Disconnect power.**

Gently unhook Wire Harness connector from circuit board. Note orientation of connector.

**Step 3 - Press and hold Reset Button; reconnect power; then release Reset Button.**

Gently reattach Wire Harness connector to circuit board. Unit will sound one (1) tone. Release Reset Button after you hear tone.

**Step 4 - Press Star key (\*) on keypad three (3) times.**

**Step 5 - Close front panel on unit.**

The Master Code is now reset to default (1251).

### Unit Reset

(Used to reset unit to factory default settings. All codes are erased in this procedure.)

**CAUTION: FOLLOWING THIS PROCEDURE WILL DELETE ALL CODES!**

**Step 1 - Open front panel on unit.**

**Step 2 - Disconnect power.**

Gently unhook Wire Harness connector from circuit board. Note orientation of connector.

**Step 3 - Press and hold Reset Button; reconnect power; then release Reset Button.**

Gently reattach Wire Harness connector to circuit board. Unit will sound one (1) tone. Release Reset Button after you hear tone.

**Step 4 - Enter Pound (#) Star (\*) Pound (#) on keypad.** (Unit will sound "good" tone.)

**Step 5 - Enter 1251 (Master Code) on keypad.** (Unit will flash status LEDs and beep.)

**Step 6 - While unit is beeping, disconnect and reconnect power.**

Do this the same way as before. Unit will then go through power-up procedure.

The unit is now reset to factory default settings.

## Notes

---

---

---

---

---

---

---

---

---

---

---

---

---

---

---

---

---

---

---

---

---

---

---

---

**Notes**

---

---

---

---

---

---

---

---

---

---

---

---

---

---

---

---

---

---

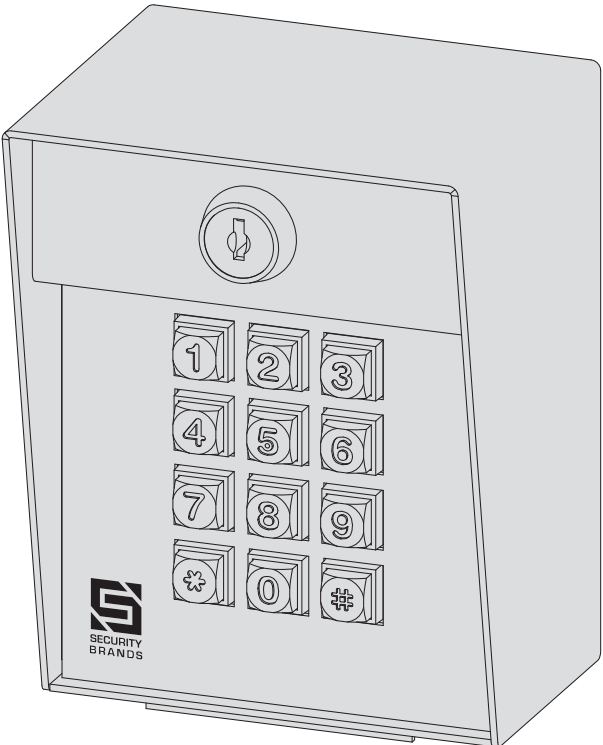
---

---

---

---

---



**Advantage DKE**  
26-500